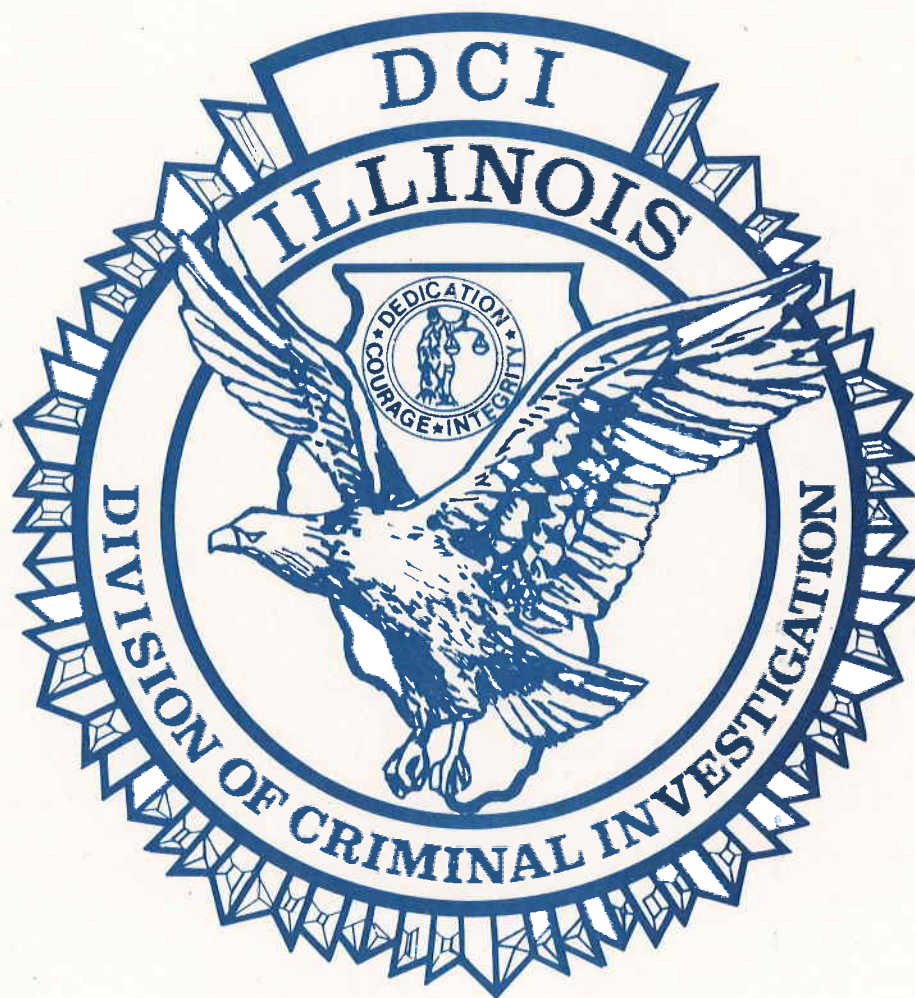


Illinois Division of Criminal Investigation



Department of Law Enforcement

ILLINOIS DIVISION OF CRIMINAL INVESTIGATION

BRIEFING BOOKLET

CONTENTS

Evolution of the Illinois Division of Criminal Investigation

Description of the Illinois Division of Criminal Investigation  
and its Commands

Schematic of the Illinois Division of Criminal Investigation

State map showing Field Office locations

Addresses of Division of Criminal Investigation Offices and Units

Manpower Summary

DCI Case Activity

Fiscal Year 1984 Budget

ILLINOIS DIVISION OF CRIMINAL INVESTIGATION

"Dedicated to the Public Trust and a Standard of Excellence"

## EVOLUTION OF THE DIVISION OF DIVISION OF CRIMINAL INVESTIGATION

On July 1, 1977, through Executive Order #2, Governor James R. Thompson reorganized the Department of Law Enforcement. Implementation of the Executive Order resulted in the consolidation of the two state-wide investigative agencies, Criminal Investigative Bureau (CIB) of the Illinois State Police and the Illinois Bureau of Investigation (IBI) into the present Division of Criminal Investigation (DCI). The integration of these two agencies resulted in a total state-wide work force of approximately three hundred investigators representing a wide latitude of experience and significant accomplishment in the academic field. Prior to the amalgamation, the Illinois Bureau of Investigation had received responsibility for state-wide investigations of illegal drug traffic, organized crime, white collar crime and to insure the integrity of horse racing within the State of Illinois. The Criminal Investigative Bureau was accountable for investigating general criminal activities, auto theft and providing investigative support to the uniform function of the Illinois State Police and local law enforcement agencies. As a result of reorganization and the emergence of the Division of Criminal Investigation, the fruits of this endeavor were soon appreciated by virtue of the elimination of duplicate efforts and a distinct awareness of the defined investigative responsibilities.

In the initial stages of reorganization, the Division's operations were divided into regions, areas and zones which were complementary to the Illinois State Police structure. The purpose of similar structuring was to facilitate geographical statistical reporting methods, procedures, coordination of patrol, and investigative functions. The regional concept was abandoned in October, 1978, to be replaced by a condensed area/zone structure. In an effort to further centralize and consolidate services, the administrative functions

for each entity were united with some functions transferred to the Division of Administration.

The Division of Criminal Investigation (DCI) is one of five Divisions within the Illinois Department of Law Enforcement. It is an investigative, policing body with jurisdiction throughout the State of Illinois. A major portion of DCI's resources are devoted to suppressing traffic in illicit drugs, developing strategic and tactical criminal intelligence data, investigating serious offenses (especially those involving fraud or multi-jurisdictional crime) and apprehending fugitives. DCI provides support to all Divisions of the Department of Law Enforcement, as well as to many county, municipal and federal law enforcement agencies.

The goal of the Division of Criminal Investigation is to respond to the needs of Illinois citizens and local law enforcement agencies by supplying professional investigative services and maintaining effective communication with the public and other governmental entities. Specifically, the Division seeks to provide those investigative services which exceed the manpower and resource capabilities of police in most communities and which are not provided by federal authorities. The Division of Criminal Investigation is composed of the following units: Operations Command, Criminal Intelligence Command, Operational Services Command and Office of Metropolitan Enforcement.

History will record that in January, 1958, the first Illinois investigative agency with state-wide authority was vested in the Division of Narcotic Control (DNC) through enabling legislation created and signed by the Honorable William G. Stratton, Governor of Illinois. The Division became operational in July of that year. The Division was charged with the investigation of illegal narcotics traffic and the regulation of the Triplicate Prescription Program. The Division of Narcotic Control and its personnel were

absorbed into the Illinois Bureau of Investigation at the time of its formation in January of 1970.

The Division of Narcotic Control, at the outset, enjoyed a complement of twenty-six inspectors, nineteen of whom were assigned to the Chicago office and the remaining seven to the Springfield office. The Chicago assigned inspectors contained their assignments to Cook County while the Springfield inspectors were responsible for investigations in the remaining counties throughout the state. The Springfield inspectors realized an added frustration by virtue of their inability to make authorized long distant telephone calls. The originating inspectors received their initial formal training from the then Federal Bureau of Narcotics.

Geographically, the original two offices were located at 160 North LaSalle in Chicago and the Fifth Floor of the State Capitol Building in Springfield. The offices were later transferred to an Exchange Street address in the Stock Yards area of Chicago and to Springfield locations in the Meyers Building and ultimately to the Iles Park complex.

In addition to narcotic enforcement and the monitoring of Triplicate Prescriptions (prescription procedures for licensed practitioners, pharmacists and hospitals), the Division of Narcotic Control was charged with the responsibility of installing training programs for local law enforcement, treatment of addicts under jail sentence in Cermak Hospital of the Chicago House of Correction and with the destruction of detected growths of marijuana. During the tenure of DNC, possession of marijuana was a felony offense. Parolees convicted of narcotic violations were required to submit to the Nalline Testing program in Chicago with the potential of revocation of parole.

The Division of Narcotic Control, as the forerunner of state-wide narcotic investigating units, exceeded the goals and aspirations established by

the legislative leaders and produced many significant cases which had a profound effect on illicit narcotic traffic within the State of Illinois.

In 1969, Governor Richard B. Ogilvie and the 76th General Assembly legislated the next significant effort toward a state-wide criminal investigation agency with the creation of the Illinois Bureau of Investigation (IBI). Governor Ogilvie called the newest component of the Department of Law Enforcement, "The Little FBI", due to the similarity of organizational structure, educational requirements and operation of the two agencies. The IBI became operational with the effective date of January 1, 1970. On January 5, 1970, the first class of Special Agents reported to the State Police Academy for an intensive ten week training program. The agents were graduated on March 12, 1970, after completing an in-depth, all encompassing exposure to the multi-faceted demands of modern day criminal investigations.

A total of nineteen Division of Narcotic Control Agents were transferred to the newly formed Illinois Bureau of Investigation. The Bureau, in its quest for supplemental manpower, recruited an additional one hundred and eighty persons from approximately one thousand applicants. The prospective agents were required to meet the following standards: A Baccalaureate Degree or two years of college and five years of law enforcement experience. The final interview and selection board for formal approval consisted of the Director and Assistant Director of the Department of Law Enforcement, Superintendent of the Illinois State Police, Superintendent and the Assistant Superintendent of the Illinois Bureau of Investigation.

The IBI was charged with the suppression and investigation of illicit narcotic traffic, organized crime and general criminal activity. The Bureau brought to local law enforcement the expertise and capability of working covert investigations in tangent with those agencies who were precluded from

independently pursuing such sophisticated and costly challenges because of inherent buy costs for the purchase of incriminating evidence and their inability to fiscally employ the necessary investigating personnel. The investigative thrust of the Organized Crime Division was concentrated in the areas of organized gambling, cartage theft, usury interest rates and the upper environs of Organized Crime figures dealing or influencing the flow of narcotic traffic.

A continuation of realignments and specialized functions were established through legislative action. On June 1, 1972, regional offices were located in Joliet, Rockford, Rock Island, Marion and East St. Louis. On January 21, 1974, an office was founded in Champaign. The offices provided an effective, accessible, geographical conduit between the assigned agents, local law enforcement and the general population.

In 1972, with the opening of regional offices, the Bureau was divided into four geographical Divisions. The Organized Crime Task Force was established in April, 1973, and expanded to a state-wide Divisional concept in February, 1974. In 1973, the Illinois General Assembly charged the Bureau with conducting investigations of administrative and criminal violations of rules and regulations promulgated by the Illinois Racing Board and Illinois Statutory Law at all race tracks within the state. The Diversion Investigation Unit (DIU) was established in May, 1974, for the purpose of ensuring against diversion of drugs from legal channels of distribution. The Unit conducted a variety of investigations regarding illegal activity associated with controlled substances including those involving illegal acquisition, possession and sale of controlled substances, forging of prescriptions, misbranding and mislabeling, improper record keeping and inventory procedures.

During its seven and one half years of existence, the Illinois Bureau of Investigation enjoyed a wide range of successes within the criminal justice system. In many instances, the Bureau pioneered the introduction of many innovative criminal investigative techniques and processes for the State of Illinois. The accomplishments attained by the Bureau, in concert with those of the Criminal Investigative Bureau, served as a cornerstone for the legislated commencement of the Division of Criminal Investigation.

Contemporaneously, with the creation of the IBI, was the consolidation of the investigative functions of the Illinois State Police in October of 1969, into an autonomous unit which ultimately became the Criminal Investigative Bureau. Previous to the amalgamation, the major investigative efforts of the State Police were vested into two units, the Crime Section and the Vehicle Investigative Section. The assigned personnel were functionally on "detached" duty but remained under the direct line authority of the local District Commander.

If the history and emergence of the Criminal Investigative Bureau is to be documented, it is necessary to research and trace the lineage of these two units.

The criminal investigative arm of the Illinois State Police was formed at the direction of Governor Adlai E. Stevenson in 1950, dedicated to the purpose of suppression of gambling in the State of Illinois. The unit was characterized as the "Flying Investigative Squad" and for three years concentrated on the investigation of casino type gambling and slot machines.

In the ensuing years, members of the Squad received various assignments from the Illinois State Police Superintendent and on occasions were ordered to assist local law enforcement with major investigations.

The Illinois State Police Bureau of Special Investigations was formed in January, 1959. A total of ten State Police officers, including some former members of the "Flying Investigative Squad", were assigned to the Bureau. The new investigators were designated "Detectives" and conducted their investigations in plain clothes and unmarked vehicles. They were provided with an independent radio designation to distinguish them from other transmissions. In September of 1960, the Bureau of Special Investigations was renamed the Detective Section and subsequently, the Crime Section in August of 1962. The personnel complement had increased to twenty-eight sworn State Police officers and their designated title was changed from "Detective" to "Agent". The agents were interspersed throughout the state, serving in various districts, with their primary responsibility to serve the State Police and local law enforcement in their pursuit of criminal investigations. In many instances, the Unit would initiate investigations at the request of the Director of the Department of Public Safety (presently the Department of Law Enforcement), Governor or State Department heads.

In 1962, the Crime Section was nominated and accepted as a member of the National Law Enforcement Intelligence Unit (LEIU). The membership remains today as a vital segment of the Division of Criminal Investigation.

In 1951, the alternate investigating arm of the Illinois State Police was created to conduct investigations of stolen and abandoned vehicles. At the outset, the Commander of the Stolen Auto Section was permitted to utilize the services of other State Police personnel only on a part-time basis. The intensification of auto thefts necessitated full-time assignments, and in October of 1956, a trooper was assigned to each district to conduct vehicle investigations within that jurisdiction.

It was March of 1957, that the name of the Stolen Auto Section was converted to the Vehicle Investigation Section (VIS). As of this date, the Unit had expanded to thirty-four members and attained national recognition by virtue of its investigative accomplishments and expertise in a field that remained untouched or impenetrable by most law enforcement agencies.

The Unit continued to expand its priorities and interests by establishing liaison with the Office of Illinois Secretary of State for the purpose of investigating the extensive perpetration of counterfeit, fraudulent, stolen and altered documents by organized vehicle theft rings. The success of this relationship resulted in the permanent placement of a unit member in the Title Files Division in 1967.

Illinois State Police District #25 was formed in October, 1969, with the merger of the Crime Section and Vehicle Investigation Section. The consolidation resulted in the assignment of more than one hundred investigators. In January, 1976, the title of District #25 was changed to the Criminal Investigation Bureau (CIB) to distinguish it from the uniform districts and to emphasize criminal investigations as its principal objective. The Bureau immediately established two pilot zones (Nine and Ten) to permit a viable geographical response to criminal investigations within those jurisdictions. The creation of the two zones increased the Bureau investigative complement to one hundred and twenty investigators.

The Criminal Investigation Bureau's primary objective was to pursue homicide, armed robbery and burglary investigations. The professional reputation of the assigned investigators were enhanced and distinguished by the proficient and skillful expertise displayed while rendering a successful conclusion to those objectives. The achievements of this Unit resulted in

necessitating a priority list to assist local law enforcement agencies in the investigation of serious criminal violations.

The strength and future of the Division of Criminal Investigation will be measured by the diversified skills of the contributing entities which represent the foundation of this multi-faceted investigation Unit. Its personnel represent a myriad of former occupations, educational disciplines, personal backgrounds, enforcement experience and investigative expertise. The personnel, sworn and civilian, are dedicated to the Division's goals and objectives and strive in unison to provide the citizens of Illinois with professional law enforcement services.

## ILLINOIS DIVISION OF CRIMINAL INVESTIGATION

William Doster  
DCI Director

The Illinois Division of Criminal Investigation (DCI) is one of five Divisions within the Department of Law Enforcement. It is an investigative, policing body with jurisdiction throughout the State of Illinois. A major portion of DCI's resources are devoted to suppressing traffic in illicit drugs, developing strategic and tactical criminal intelligence data, investigating serious offenses (especially those involving fraud or multi-jurisdictional crime) and apprehending fugitives. DCI provides support to all Divisions of the Department of Law Enforcement, as well as to many county, municipal and federal law enforcement agencies.

The goal of the Division of Criminal Investigation is to respond to the needs of Illinois citizens and local law enforcement agencies by supplying professional investigative services and maintaining effective communication with the public and other governmental entities. Specifically, the Division seeks to provide those investigative services which exceed the manpower and resource capabilities of police in most communities and which are not provided by federal authorities. The Division of Criminal Investigation is composed of the following units: Operations Command, Criminal Intelligence Command, Operational Services Command, and the Office of Metropolitan Enforcement.

Stephen Marada  
Assistant DCI Director  
Operational Services Command

Provides centrally controlled, administrative and professional services which support the enforcement efforts of other components of the Division. Operational Services Command performs investigative record keeping functions, operates the communications apparatus at the Headquarters facility and maintains the Division's Management Information System. Responsibility for providing executive staff support is also vested in this component of the organization. Such duties and responsibilities include maintaining budget; accounting and personnel records; planning and research; providing legislative liaison; and State-wide media/press coordination.

Richard Kozak  
Acting Assistant DCI Director  
Criminal Intelligence Command

The Criminal Intelligence Command provides support to law enforcement operations by monitoring the activities of serious criminal violators. The Command is responsible for developing strategic and tactical information concerning the origins, activities, personnel and incidents of major criminal

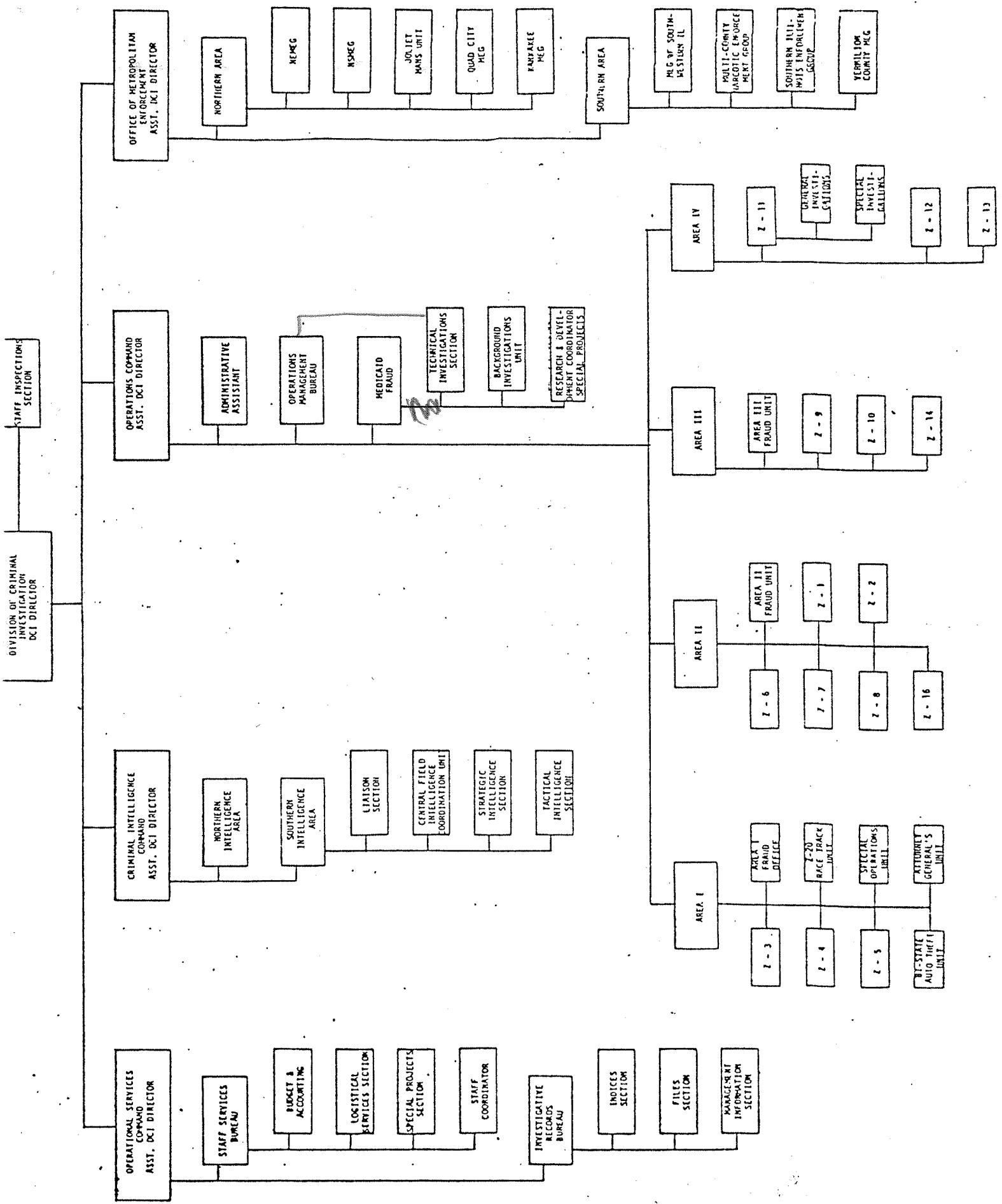
activities on a State-wide basis. In carrying out this responsibility, the Command is charged to collect, evaluate, collate, analyze and disseminate intelligence data. The resulting intelligence data is available for targeting significant criminal operations, supporting Department of Law Enforcement operations and to meet the legitimate informational needs of other law enforcement agencies. The Command's personnel are assigned to three operational areas, namely the Northern, Central, and Southern Intelligence Areas, with offices in Des Plaines, Springfield and Fairview Heights, Illinois.

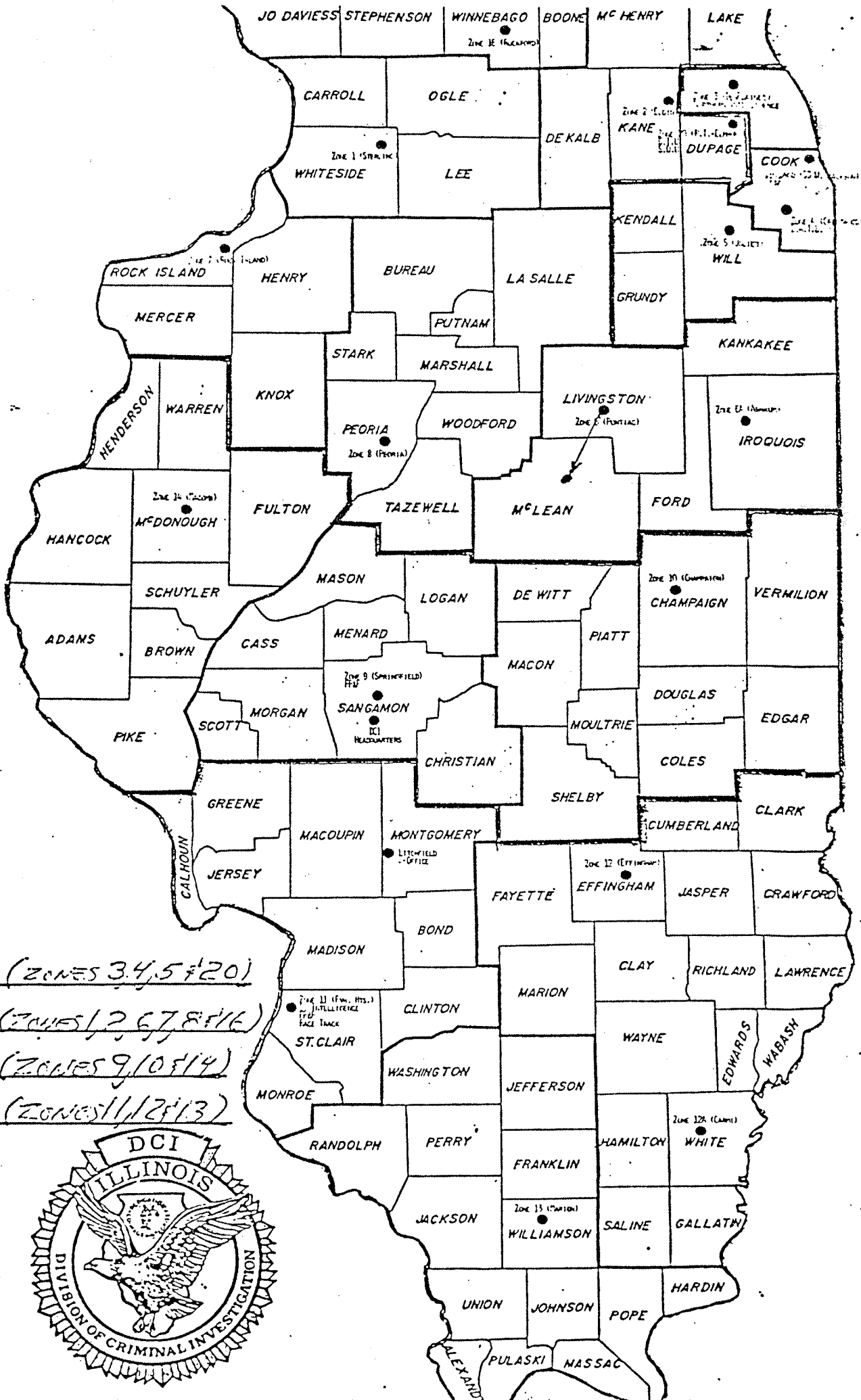
Ronald Grimmig  
Assistant DCI Director  
Operations Command

Conducts all investigative and enforcement activities in which the Division engages. Geographically, Operations Command is separated into four area commands encompassing the State of Illinois with each area further sub-divided into zones. The following is a more definitive description of each area and the zones effected by the respective commands. Area I is represented by Des Plaines (Zone 3), Palos Heights (Zone 4), and Joliet (Zone 5); Area 2 is represented by Sterling (Zone 1), Elgin (Zone 2), Bloomington (Zone 6), E. Moline (Zone 7), Peoria (Zone 8) and Rockford (Zone 16); Area 3 is represented by Springfield (Zone 9), Champaign (Zone 10) and Macomb (Zone 14); Area 4 is represented by Fairview Heights (Zone 11), Effingham (Zone 12) and Marion (Zone 13). The located facilities provide greater access by Illinois citizens to the services which the agency provides. The Command also operates a number of specialized investigative functions. A Race Track Unit is responsible for preserving the integrity of horse racing throughout the State. A Special Operations Unit handles a wide variety of investigative matters deemed appropriate for specialized, concentrated attention. The Bi-State Auto Theft Unit is a joint Illinois-Indiana task force investigating auto theft in the Chicago and northwest Indiana area. A small unit provides investigative assistance to the Attorney General's Office. The Financial Fraud and Forgery Unit conducts white-collar crime investigations warranting specialized and/or concentrated attention by the Division. The investigation of fraud and other criminal acts perpetrated with the public assistance programs administered by the Illinois Department of Public Aid is the primary responsibility of this Unit. These priorities include the identification, investigation and prosecution of medicaid fraud; and the investigation of stolen/forged state warrants. The secondary responsibility of the Financial Fraud and Forgery Unit entails the investigation of alleged frauds against State government, insurance frauds and illicit practices pertaining to negotiable instruments. The Unit has three principle offices located in Chicago, Springfield and Fairview Heights.

Richard S. Kozak  
Assistant DCI Director  
Office of Metropolitan Enforcement

The Office of Metropolitan Enforcement administers the Department's responsibilities as set forth in the Intergovernmental Drug Law Enforcement Act. This office makes grants to duly constituted Metropolitan Enforcement Groups (MEGS) and monitors their expenditures of State funds. Currently, nine (9) MEG units operate in the State: Northeastern (Cook County), North Shore (Lake County), Joliet, Quad Cities, Peoria, Vermilion County, East St. Louis, Southern Illinois and Kankakee. The office also provides administrative supervision to DCI personnel assigned to MEG units. Most importantly, it serves as an operational and informational link between MEG units and drug investigative efforts. This link serves to maximize the use of investigative resources in State-wide drug enforcement.





AREA I (ZONES 3, 4, 5 & 20)  
 AREA II (ZONES 1, 2, 6, 7, 8 & 16)  
 AREA III (ZONES 9, 10 & 14)  
 AREA IV (ZONES 11, 12 & 13)



DIVISION OF CRIMINAL INVESTIGATION

HEADQUARTERS

DCI Director William Doster  
500 Armory Building  
Springfield, Illinois 62706 (217)782-7915

53 West Jackson Blvd., 14th Floor  
Chicago, Illinois 60604 (312)793-2620

STAFF INSPECTIONS UNIT

Commander John Landers  
500 Armory Building  
Springfield, Illinois 62706 (217)782-7918

OPERATIONAL SERVICES COMMAND

Assistant DCI Director Stephen Marada  
500 Armory Building  
Springfield, Illinois 62706 (217)782-7917

Investigative Records Bureau  
Acting Bureau Chief William Lyons  
600 Armory Building  
Springfield, Illinois 62706 (217)782-4753

CRIMINAL INTELLIGENCE COMMAND

Acting Assistant DCI Director Richard Kozak  
600 Armory Building  
Springfield, Illinois 62706 (217)782-6650

Northern Intelligence Area  
Special Agent-In-Charge Charles Doerr  
477 South River Road  
Des Plaines, Illinois 60016 (312)827-2790

Southern Intelligence Area  
Special Agent-In-Charge Damon Runyon  
600 Armory Building  
Springfield, Illinois 62706 (217)782-4794

OFFICE OF METROPOLITAN ENFORCEMENT

Assistant DCI Director Richard Kozak  
600 Armory Building  
Chicago, Illinois 60604 (312)793-2834

MEG Northern Area Coordinator  
Special Agent-In-Charge Lowell Southern  
500 Armory Building  
Springfield, Illinois 62704 (217)785-4374

January 23, 1984

NEMEG  
Director Robert Taylor  
P. O. Box 6605  
Broadview, Illinois 60153 (312)449-1000

Deputy Director Frank Gomilla  
P. O. Box 6605  
Broadview, Illinois 60153 (312)449-1000

NSMEG  
Director Richard Pariser  
850 Waukegan Road  
Deerfield, Illinois 60015 (312)295-2310

Joliet Mans Unit  
Director Ronald Janota  
P. O. Box 2001  
Joliet, Illinois 60431 (815)726-5944

Quad Cities MEG  
Director James Cunningham  
P. O. Box 910  
Moline, Illinois 61265 (309)797-1411

MEG Southern Area Coordinator  
Special Agent-In-Charge John Naylor  
500 Armory Building  
Springfield, Illinois 62706 (217)785-4373

Kankakee MEG  
Director John Moraitis  
P.O. Box 320  
Bourbonnais, Illinois 60914 (815)933-3953

MEG of Southwestern Illinois  
Director James Nichols  
P. O. Box 195  
Wood River, Illinois 62905 (618)254-1796

Multi-County Narcotic Enforcement Group  
Director Charles Schofield  
Peoria County Courthouse, Room 23  
Peoria, Illinois 61602 (309)673-3465

Carbondale MEG  
Director Dennis Bowman  
P. O. Box 565  
Murphysboro, Illinois 62966 (618)457-2514

Vermilion County MEG  
Director Robert Putnam  
P. O. Box 1123  
Danville, Illinois 61832 (217)443-1466

OPERATIONS COMMAND

Assistant DCI Director Ron Grimming  
500 Armory Building  
Springfield, Illinois 62706

(217)782-8760

Operations Management Bureau  
Bureau Chief Earl Boyer  
500 Armory Building  
Springfield, Illinois 62706

(217)782-5166

Medicaid Fraud Control Unit  
S/A Supervisor Randy Wohlgemuth  
1035 Outer Park Dr., Suite 202  
Springfield, Illinois 62704

(217)785-3320

AREA I (Zones 3, 4, 5, & 20)

Special Agent-In-Charge Thomas Schump  
188 Industrial Drive, Room 437  
Elmhurst, Illinois 60126

(312)530-3606

AREA I Fraud Office  
Commander Robert Johnson  
53 West Jackson Boulevard, 14th Floor  
Chicago, Illinois 60604

(312)793-2620

Bi-State Auto Theft Unit  
Commander Dennis Meyer  
12800 South Austin  
Palos Heights, Illinois 60463

(312)371-4693

Special Operations Unit  
Acting Commander Thomas Biebel  
188 Industrial Drive, Room 437  
Elmhurst, Illinois 60126

(312)530-3605

Attorney General's Unit  
S/A Dennis Wilson  
160 N. LaSalle, Room 816  
Chicago, Illinois 60601

(312)793-3798

AREA II (Zones 1, 2, 6, 7, 8, & 16)

Special Agent-In-Charge Larry Dowdy  
3107 East Lincolnway  
Sterling, Illinois 61081

(815)625-4204

Area II Fraud Unit  
810 East State Street, Room 102  
Rockford, Illinois 61104

(815)987-7440

AREA III (Zones 9, 10, & 14)  
Special Agent-In-Charge Kenneth Metcalf  
1035 Outer Park Drive, Room 201  
Springfield, Illinois 62704

(217)782-6025

AREA III Fraud Office  
Commander David Erdmann  
1035 Outer Park Drive, Suite 202  
Springfield, Illinois 62704

(217)785-3320

AREA IV (Zones 11, 12, & 13)  
Special Agent-In-Charge L. Robert Magnusen  
101 West Main Street  
Collinsville, Illinois 62234

(618)345-2700

CHAMPAIGN (Zone 10)  
Commander Robert Perryman  
Regional State Office Building  
2125 South First Street  
Champaign, Illinois 61820 (217)333-1211

COLLINSVILLE (Zone 11)  
Commander Phil Kocis  
101 W. Main Street  
Collinsville, Illinois 62234 (618)345-2700

LITCHFIELD (Zone 11A)  
Route 16 West  
Litchfield, Illinois 62056 (217)782-3610

EFFINGHAM (Zone 12)  
Commander John Moomaw  
P. O. Box 1343  
U. S. Route 45 South  
Effingham, Illinois 62401 (217)536-6165

CARMI (Zone 12A)  
Route 14 West  
Carmi, Illinois 62821 (618)382-4609

MARION (Zone 13)  
Commander Charles Spruell  
2209 West Main  
Marion, Illinois 62959 (618)997-9431

MACOMB (Zone 14)  
Commander William Collins  
P. O. Box 483  
Macomb, Illinois 61455 (309)837-9981

QUINCY (Zone 14A)  
Kirlin Plaza Building, Room 204  
524 Maine  
Quincy, Illinois 62301 (217)222-0331

ROCKFORD (Zone 16)  
Commander Joseph Gryz  
810 East State Street, Room 102  
Rockford, Illinois 61104 (815)987-7440

ELMHURST (Zone 20/Race Track)  
Commander Leonard Becicka  
188 Industrial Drive, Room 437  
Elmhurst, Illinois 60126 (312)530-3601

	S/A I	S/A I Sr. Agent	S/A I Inspector	S/A II	S/A III	S/A IV	S/A V	S/A VI	Exempt	M C	Code	Special Agents	Support
DCI DIRECTOR/STAFF									1	1		1	1
INSPECTIONS						2	1					3	0
OPERATIONAL SERVICES COMMAND									1	1		1	1
STAFF SERVICES				2	2			1		1	4	5	5
INVESTIGATIVE RECORDS						1					14	1	14
OPERATIONS COMMAND							1		1	5	4	2	9
OPERATIONS MANAGEMENT	3			3	2	1	1		1	1	2	10	3
AREA I	29	8	1	15	11	9	3	2		4	11	78	15
AREA II	13	7	2	15	11	3	4			1	7	55	8
AREA III	9	8	2	10	10	1	4			1	5	44	6
AREA IV	16	11	2	10	15	4	1			3	11	59	14
(RACE TRACK)	(3)	(1)		(4)	(2)	(3)		(1)		(1)	(2)	(14)	(3)
(FRAUD)	(22)	(5)	(1)	(9)	(7)	(6)	(1)			(8)	(6)	(51)	(14)
CRIMINAL INTELLIGENCE COMMAND									1	1		1	1
NORTHERN	2	1	1	5	1	3	1	1			3	14	3
SOUTHERN/HDTRS.				1	1	4	1				9	7	9
METROPOLITAN ENFORCEMENT								2	1	1		3	1
NORTHSHORE MEG		1			1							2	
NORTHEASTERN MEG/DIU	1	5		1	3	1				1		11	1
DANVILLE MEG				1								1	
OTHER MEG		1			1	2						4	
SPECIAL ASSIGNMENT *	1				1		1					3	
TEMPORARY DUTY ASSIGNMENT **						1						1	
LEAVE OF ABSENCE		1		3	7	1					2	12	2
TOTAL	74	43	8	66	66	33	17	6	5	21	72	318	93

\* On DCI payroll but not subject to direct DCI supervision and not with DLE.

\*\* On DCI payroll but assigned elsewhere in department.  
 ( ) Signifies - not included in totals.

DCI CASE ACTIVITY

	<u>FY 83</u>	<u>FY 84 (1st 6 months)</u>
DCI Initiated	64.7%	68.1%
Assistance to/Referral from:		
ISP	8.1%	6.0%
SHERIFFS	4.8%	6.2%
LOCAL POLICE	11.8%	10.3%
OTHER AGENCIES	<u>10.6%</u>	<u>9.4%</u>
	100.0%	100.0%

DIVISION OF CRIMINAL INVESTIGATION

FISCAL YEAR 1984 BUDGET

Personal Services	\$ 11,381,200.00
Contractual Services	839,400.00
Travel	222,000.00
Commodities	44,100.00
Printing	15,500.00
Equipment	29,600.00
Electronic Data Processing	16,900.00
Telecommunication Services	339,700.00
Operation of Automotive Equipment	<u>859,500.00</u>
MEG Funds	<u>1,498,500.00</u>
* Total	\$ 15,246,400.00

\* Does not include State contributions to State Employees' Retirement System and Social Security.